

Epsin2 Antibody (N-term)
Purified Rabbit Polyclonal Antibody (Pab)
Catalog # AP2182a**Specification**

Epsin2 Antibody (N-term) - Product Information

Application	WB, IHC-P,E
Primary Accession	O95208
Other Accession	O9Z1Z3 , O8CHU3 , O88339 , O80VP1 , O9Y6I3 , O8IYW4
Reactivity	Human, Mouse
Predicted	Rat
Host	Rabbit
Clonality	Polyclonal
Isotype	Rabbit IgG
Calculated MW	68482
Antigen Region	6-36

Epsin2 Antibody (N-term) - Additional Information**Gene ID** 22905**Other Names**

Epsin-2, EPS-15-interacting protein 2, EPN2, KIAA1065

Target/Specificity

This Epsin2 antibody is generated from rabbits immunized with a KLH conjugated synthetic peptide between 6-36 amino acids from the N-terminal region of human Epsin2.

Dilution

WB~~1:1000

IHC-P~~1:50~100

E~~Use at an assay dependent concentration.

Format

Purified polyclonal antibody supplied in PBS with 0.09% (W/V) sodium azide. This antibody is purified through a protein A column, followed by peptide affinity purification.

Storage

Maintain refrigerated at 2-8°C for up to 2 weeks. For long term storage store at -20°C in small aliquots to prevent freeze-thaw cycles.

Precautions

Epsin2 Antibody (N-term) is for research use only and not for use in diagnostic or therapeutic procedures.

Epsin2 Antibody (N-term) - Protein Information

Name EPN2

Synonyms KIAA1065

Function Plays a role in the formation of clathrin-coated invaginations and endocytosis.

Cellular Location

Cytoplasm. Cytoplasmic vesicle, clathrin-coated vesicle. Note=In punctate structures throughout the cell, associated with clathrin-coated vesicles, and particularly concentrated in the region of the Golgi complex

Tissue Location

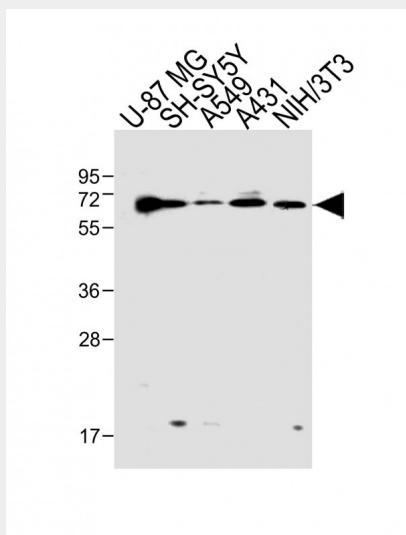
Highest expression is found in brain. Detected at lower levels in lung and liver.

Epsin2 Antibody (N-term) - Protocols

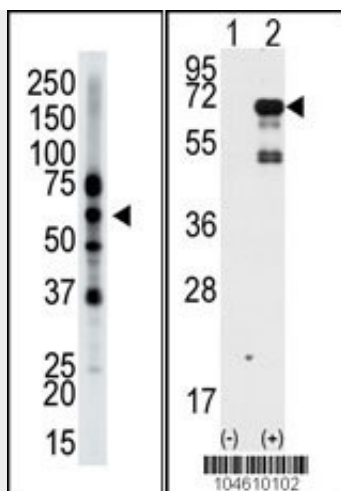
Provided below are standard protocols that you may find useful for product applications.

- [Western Blot](#)
- [Blocking Peptides](#)
- [Dot Blot](#)
- [Immunohistochemistry](#)
- [Immunofluorescence](#)
- [Immunoprecipitation](#)
- [Flow Cytometry](#)
- [Cell Culture](#)

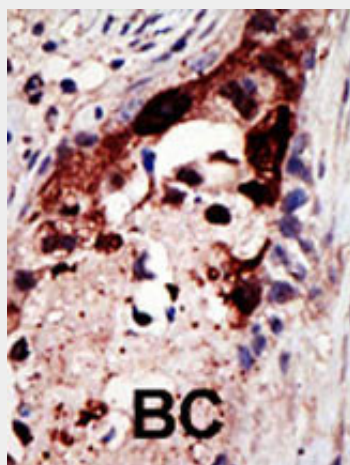
Epsin2 Antibody (N-term) - Images



All lanes : Anti-Epsin2/1 Antibody (N-term) at 1:1000 dilution Lane 1: U-87 MG whole cell lysate Lane 2: SH-SY5Y whole cell lysate Lane 3: A549 whole cell lysate Lane 4: A431 whole cell lysate Lane 5: NIH/3T3 whole cell lysate Lysates/proteins at 20 µg per lane. Secondary Goat Anti-Rabbit IgG, (H+L), Peroxidase conjugated at 1/10000 dilution. Predicted band size : 68 kDa Blocking/Dilution buffer: 5% NFDM/TBST.



The anti-Epsin2 Pab (Cat. #AP2182a) is used in Western blot to detect Epsin2 in mouse brain tissue lysate.



Formalin-fixed and paraffin-embedded human cancer tissue reacted with the primary antibody, which was peroxidase-conjugated to the secondary antibody, followed by AEC staining. This data demonstrates the use of this antibody for immunohistochemistry; clinical relevance has not been evaluated. BC = breast carcinoma; HC = hepatocarcinoma.

Epsin2 Antibody (N-term) - Background

Epsin2 plays a role in the formation of clathrin-coated invaginations and endocytosis. It binds to EPS15 (via the NPF repeat domain), as well as to AP-2 and clathrin (via the DPW repeat domain). The protein resides in the cytoplasm, in punctate structures throughout the cell, associated with clathrin-coated vesicles, and is particularly concentrated in the region of the Golgi complex. Highest expression is found in brain, with lower levels detected in lung and liver.

Epsin2 Antibody (N-term) - References

Ota, T., et al., Nat. Genet. 36(1):40-45 (2004).
Kikuno, R., et al., DNA Res. 6(3):197-205 (1999).
Rosenthal, J.A., et al., J. Biol. Chem. 274(48):33959-33965 (1999).

Epsin2 Antibody (N-term) - Citations

- [Endocytic recycling protein EHD1 regulates primary cilia morphogenesis and SHH signaling during neural tube development.](#)